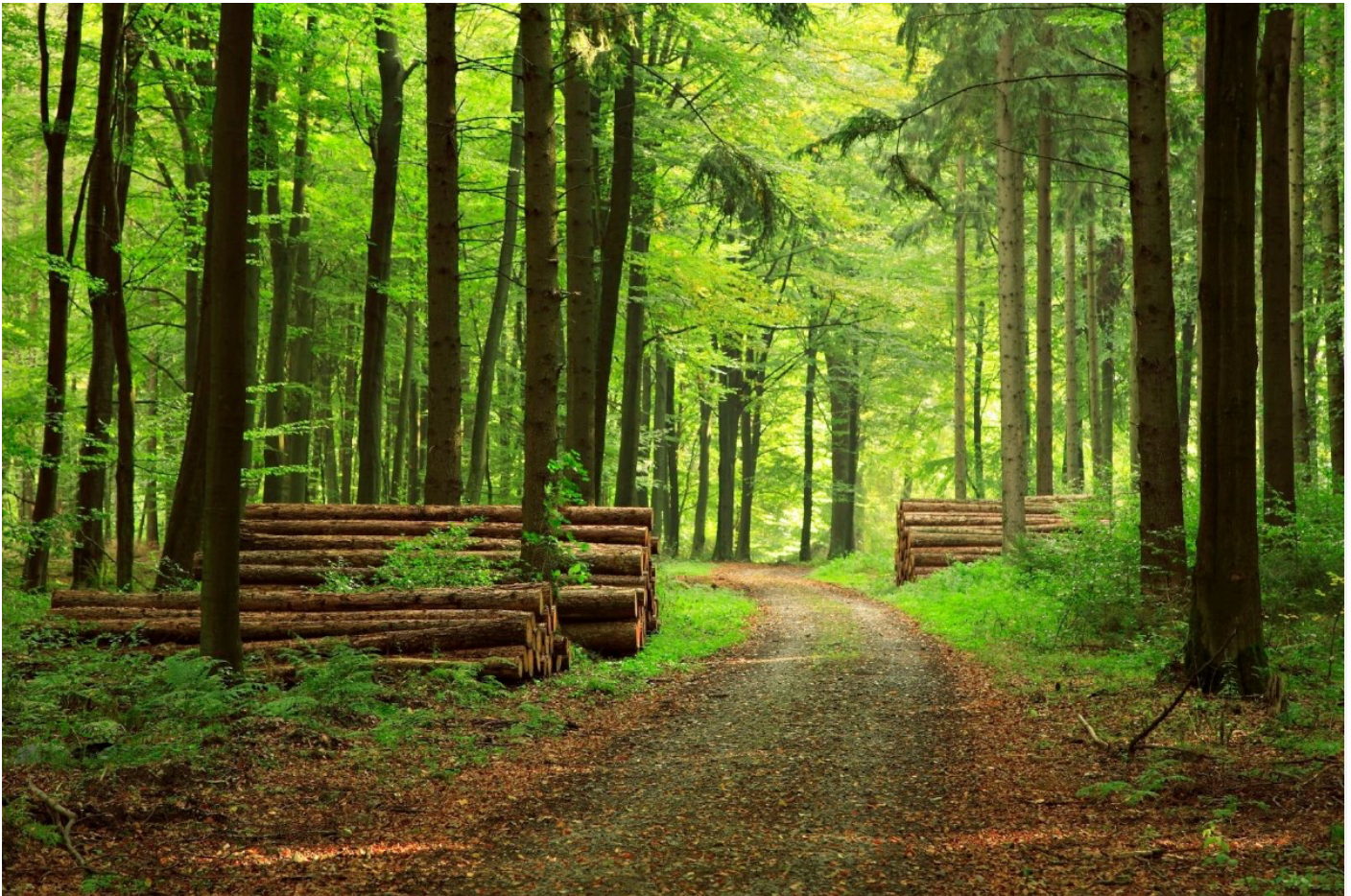


Wood heating and biomass fragmentation for business





Benefits of heating with wood

- Large fuel cost savings relative to LPG, diesel, heat pumps and gas (up to 60% lower)
- Sustainable energy solution, using wood waste from forestry operations otherwise left unused
- Local fuel supply chains, with stable fuel prices and supporting your local economy
- Fully automated boiler technology, from fuel feeding to ignition to ash removal



Fuel-grade wood chips



Wood pellets

What we do

We help New Zealand businesses and institutions reduce their heating bills and environmental footprint by deploying the latest wood boiler and biomass fragmentation technology.

Our products and services

- Design-build wood boiler installations
- Wood energy contracting, including fully-financed solutions
- Supply of fuel-grade wood chips in a number of regional centres
- Sales and distribution of JENZ biomass shredders and chippers

Compelling reasons to partner with us

- We are the most experienced wood energy contractor in New Zealand with an established blue-chip client base
- We take a holistic approach to project delivery covering design, technology and fuel supply
- We have established supply relationships with world-class boiler and fuel handling equipment suppliers in Europe and New Zealand
- We offer complete lifecycle support from a single accountable wood heat partner covering design, plant supply and installation, wood fuel supply and post-installation care
- We are a 100% wood energy specialist with deep understanding of what it takes to design, deliver and support a results-oriented installation
- As manufacturer of fuel-grade wood chips in our own right, we understand the operational challenges faced by operators in the wood recycling and greenwaste markets



ETA eHACK Wood boiler



JENZ HEM561DL Log Chipper

Contact us today to get started

Ecotec Limited

PO Box 2683
 Wakatipu
 Queenstown 9349
 Ph. 03 428 2992
 A/H 021 766 110

hello@ecotec.nz
 www.ecotec.nz

Technology partners

- | | |
|-----------------------------|----------------------------|
| ETA (Austria) | Wood boilers up to 500kW |
| Schmid (Switzerland) | Biomass boilers from 500kW |
| JENZ (Germany) | Biomass fragmentation |

Selected clients around New Zealand

